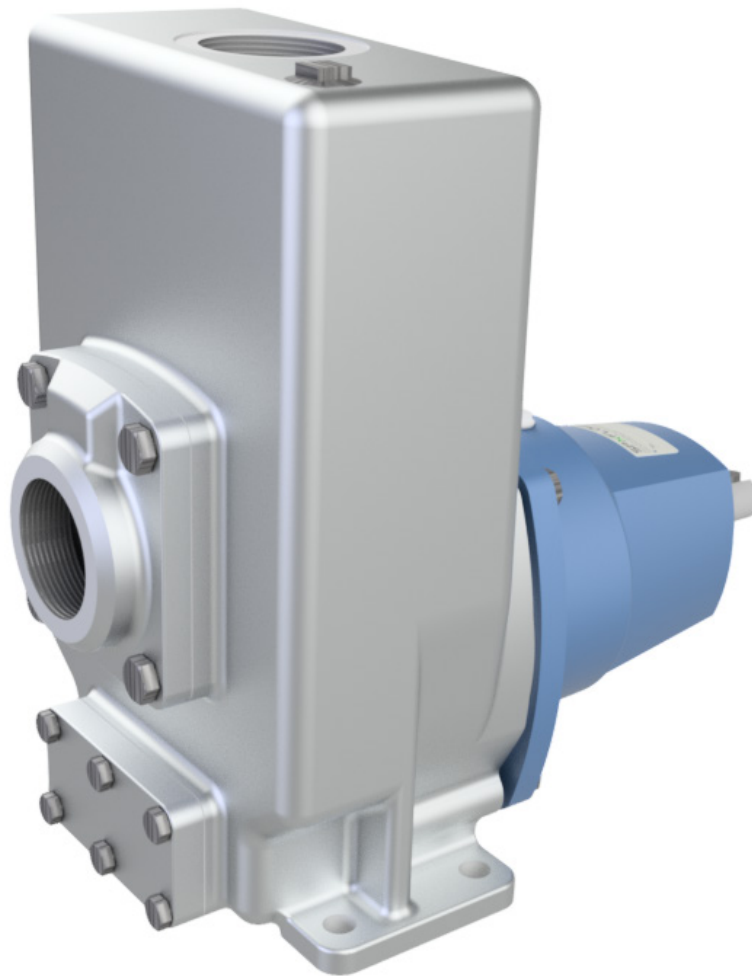
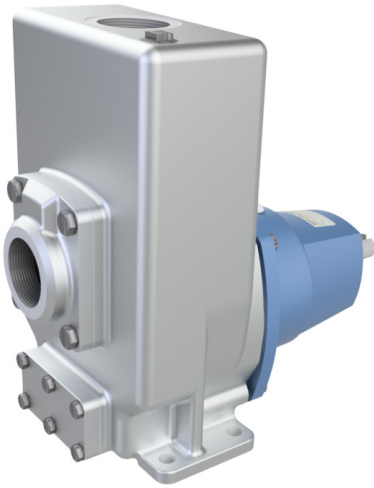


KGE

Stainless steel Self-priming
Non clog centrifugal pumps





KEY FEATURES

- Excellent self-priming ability
- Oil bath for the mechanical seal
- Ideal for handling contaminated liquids
- Outstanding qualities for liquids containing gas or air
- Easy maintenance (back pull-out)
- Easy operation

Typical product applications

Chemical



Industrial Water



General Industry

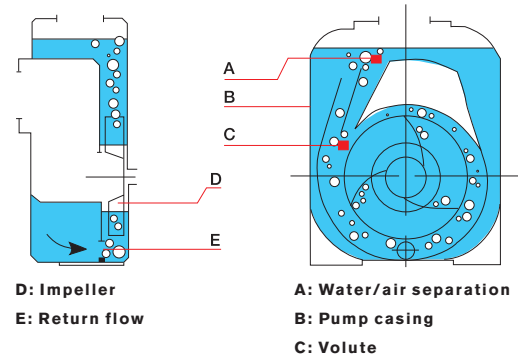


Operating principle

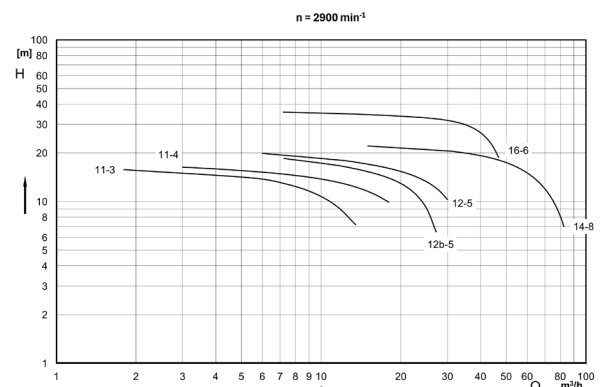
The self-priming operation of the KGE is based on the injection principle.

On start-up the air in the suction pipe is drawn into the pump, with the air and liquid mixture being compressed in the pump. This mixture flows to the top of the pump casing where the air separates from the liquid and is removed through the discharge pipe. The liquid recirculates in the pump casing until all air is evacuated from the suction pipe. The pump functions thereafter as a conventional centri-fugal pump.

Before first start-up, the pump casing must be filled once with liquid. The special design prevents the pump emptying after it has stopped pumping. In that way there is enough liquid in the pump for the next start-up.



Performance overview



Technical data

Maximum Capacity	55 m ³ /hr
Maximum Delivery Head	35 m
Maximum Suction Head	7 m
Maximum Operating Pressure	8 bar

Features and Benefits

EXCELLENT SELF-PRIMING ABILITIES

- Ability to handle liquids containing air or gas
- No special arrangement is required for self-priming action

SEAL OPTIONS

- Hard Face seal with VITON elastomers
- Suitable for a wide variety of applications

ELASTOMERS & PACKING

- Flap valve & Oil seal with VITON elastomer
- All sealing gasket - PTFE

MATERIAL AND MANUFACTURING ADVANTAGE

- All wetted components are Investment casted CF8M
- Impeller with wider flow passage avoid clogging and can handle solids upto 22mm diameter.

BEARINGS

- Dust tight
- Grease lubricated

OIL CHAMBER

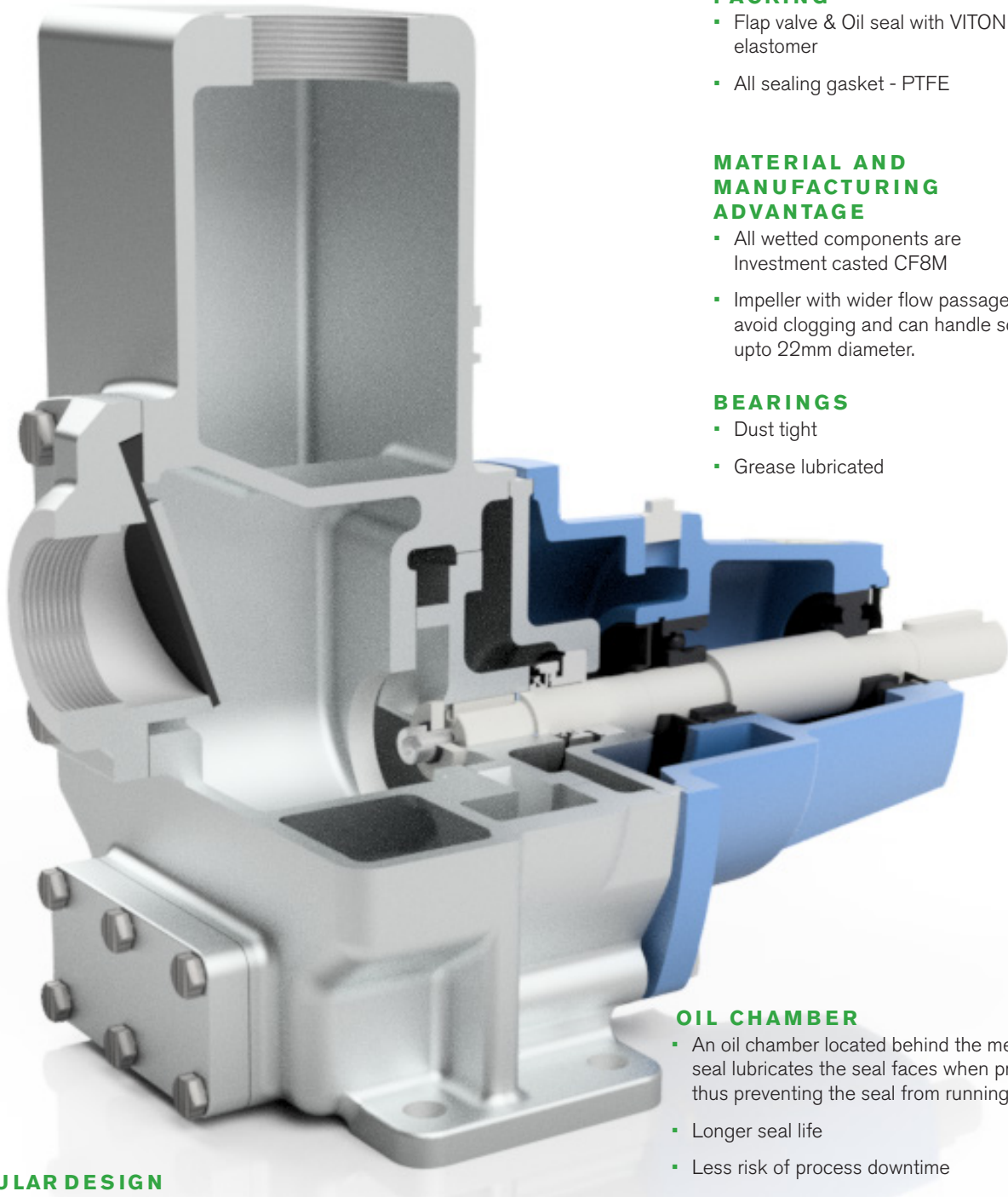
- An oil chamber located behind the mechanical seal lubricates the seal faces when priming - thus preventing the seal from running dry
- Longer seal life
- Less risk of process downtime

MODULAR DESIGN

- Fewer parts thanks to high interchange-ability of parts within the range
- Rugged construction

INDPECTION AND CLEANING COVER

- Easy maintenance and cleaning



KGE

SPXFLOW[®]

Stainless steel Self-priming
Non clog centrifugal pumps

Your local contact:

www.spxflow.com/johnson-pump/products/kge-self-priming-centrifugal-pump

SPX FLOW TECHNOLOGY (INDIA) PRIVATE LIMITED
(Formerly Johnson pump (India) Private Limited)

SURVEY NO.275, ODHAV ROAD, ODHAV, AHMEDABAD - 382415, INDIA

CIN : U51900GJ1980PTC050281

TEL : +91 (0)79 6677 8813

E-MAIL : johnson-pump.in@spxflow.com

www.spxflow.com

SPX FLOW, Inc. reserves the right to incorporate our latest design and material changes without notice or obligation.

Design features, materials of construction and dimensional data, as described in this bulletin, are provided for your information only and should not be relied upon unless confirmed in writing. Please contact your local sales representative for product availability in your region. For more information visit www.spxflow.com and www.johnson-pump.com.

The green ">" is a trademark of SPX FLOW, Inc.

JP_KGE_SS_IN Version: 03/2026 Issued: 03/2026

COPYRIGHT © 2026 SPX FLOW, Inc.